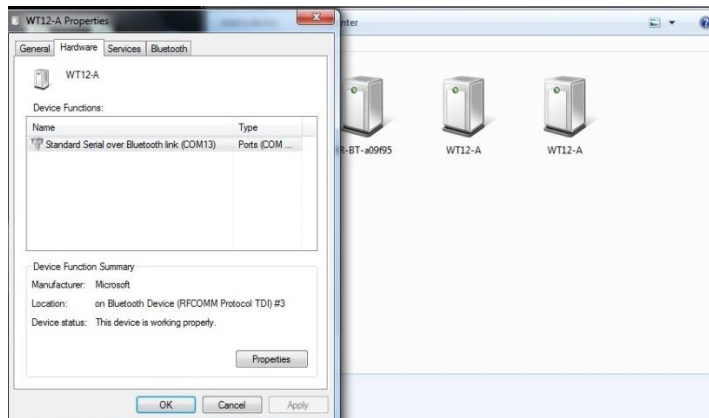




HOW TO ACCESS BLUETOOTH DATA LOGGING ON A YOUR SPEED IS SIGN

Connecting the Bluetooth

- First connect the Bluetooth from your Windows laptop/tablet – Right click your Bluetooth Icon and add Bluetooth device
- Your computer should see the signs as WT12-A or Bluetooth device
- You will need to enter the Bluetooth password which is 12345678 and then select next
- The Bluetooth device should now install and appear in your Bluetooth devices
- Right click on the Bluetooth device and left click properties, under the hardware tab it will show your port number (note this down) and close the windows



Connecting to Pastros

- Open the Pastros Software
- Click signboard – select serial port
- A window will now appear and select the port your Bluetooth device has been assigned to and click ok
- Once this has been successful – a ‘done’ window will appear
- For sign settings select – settings – display settings – Your computer will download the settings in your sign

On-site example as below

