

## Connecting to Pastros

First connect Bluetooth

Right click your Bluetooth icon > click Add Bluetooth device

Your computer should now see the sign.

The sign will show up as WT12-A Select and Click next

You will be asked for the Bluetooth password: 12345678

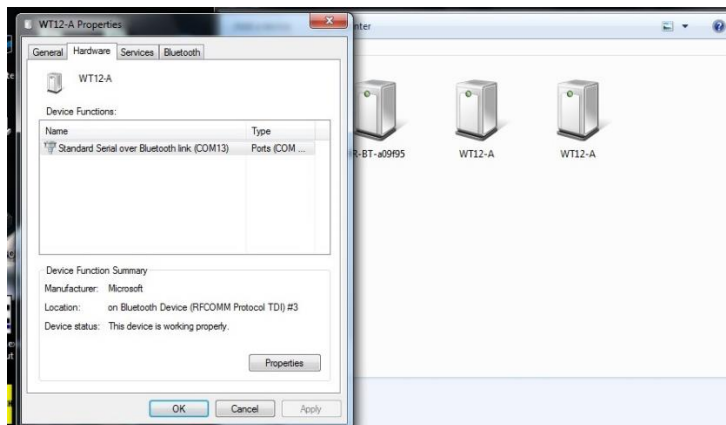
Click next

The Bluetooth device should now install and appear in your Bluetooth devices

You will now have to find the port it has been assigned.

Right click on the Bluetooth device and left click properties.

Under the Hardware tab it will show you your PORT number (note this down) and close the windows



Open Pastros software

Click Signboard > select serial port

A window will now appear select the port your Bluetooth device has been assigned to and click ok.

If you are successful a DONE window will appear

For the sign settings click settings > display settings. Your computer will download the settings in your sign.

