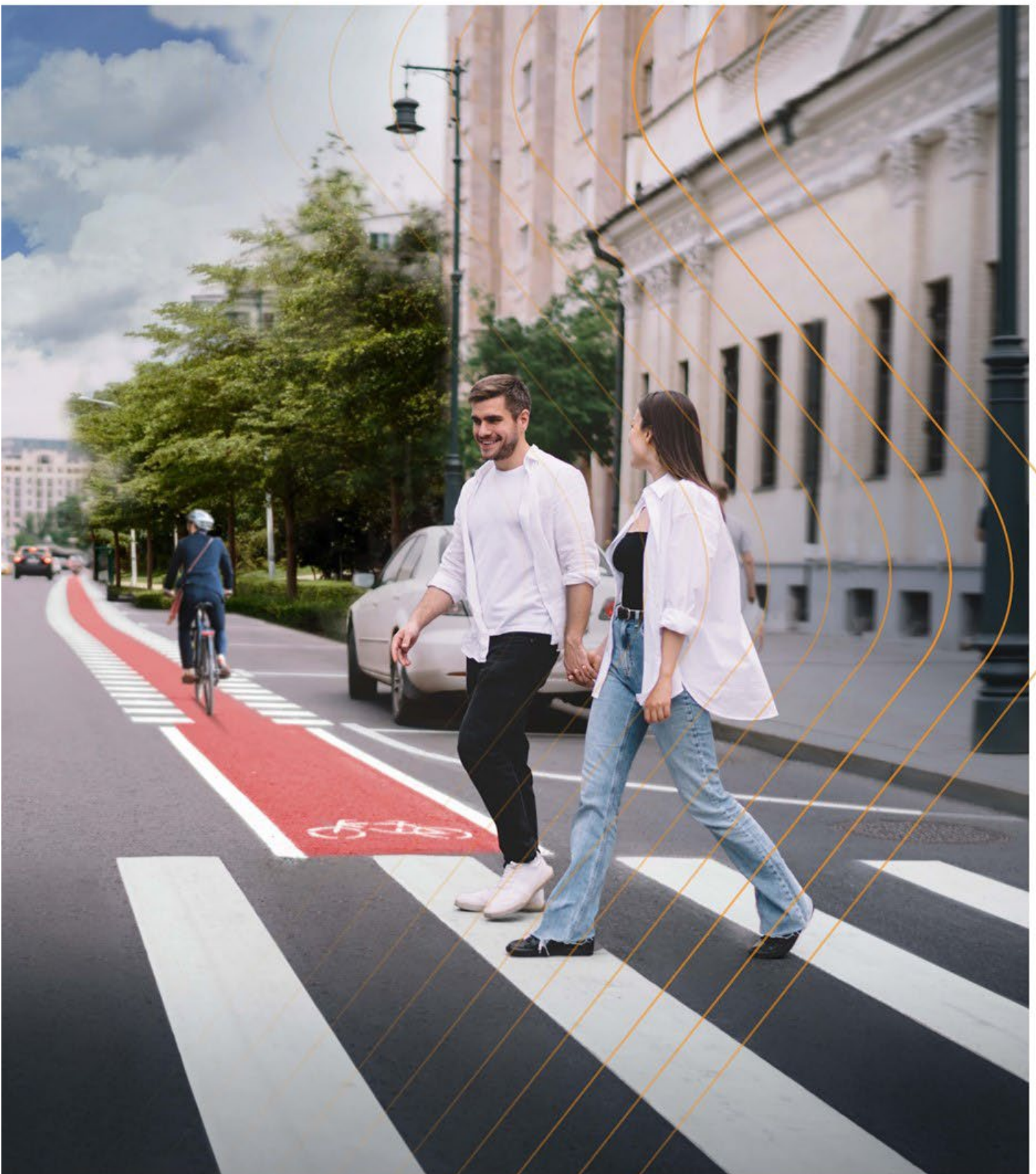


TECHNICAL INFORMATION

2-C Sports Field Paint



2-C Sports Field Paint

Art.-No.: 6009016, white
Art.-No.: 600....RAL....., colored

Version: 2024-07-02

1	Main characteristics / Field of applications	3
2	Technical Data	3
3	Processing Instructions.....	3
3.1	Preparation of material	3
3.2	Optimizing of application properties	4
4	Surfaces / pretreatment	4
5	Application technique	4

Important Information:

Please consider our General Terms and Conditions and the general notes of the Technical Information Sheet! No liability is accepted for any errors! The information is provided to our best knowledge and experience. This information is, however, no warranty for any properties of the material. We provide this information without obligation, also regarding the rights of third parties. The user has to make sure that the material is appropriate for the respective application.

1 Main characteristics / Field of applications

2-C sport field paint...

- is a solvent-based, aromatic-free two-component paint
- is designed for elastic floorings (e. g. rubber, tartan, etc.) commonly used at sport facilities
- can be applied using airless or airspray technique

2 Technical Data

Color	White, (other colors upon request)
Density	ca. 1.30 kg/l +/- 0.1 kg/l (with SWARCODUR hardener)
Mixing ratio	Base component : hardener (SWARCODUR PU/ACRYL) = 5 : 1
Curing time	approx. 7 hours Curing / drying time depends on climate (temperature, humidity, wind), material and layer thickness and substrate. In general, the marking's trafficability must be checked before exposing it to traffic impact.
Pot life	min. 5 hours
Thinner	If necessary max. 5% Thinner PU/ACRYL (Art. No. 8630) for optimizing spray properties
Cleaning of machine	For cleaning use 2-Comp. Acryl (Art. No. 8630) or Special cleaner for marking machines (Art. No. 3086)
Storage stability	6 months in sealed container, protected from frost and direct sun light
Standard packaging	2-comp. sport field paint: tin container 10 kg filling weight SWARCODUR PU/ACRYL: 2 kg can, corresponding with 10 kg base component
Identification	The regulations and instructions concerning appropriate transport, handling, storage, first aid and measures, toxicology and ecology are stated in detail in our material safety data sheets. The instructions stated on the product label and in the MSDS must be followed.
Application temperature	min +10°C
Substrate temperature	+10°C to +45°C
Relative humidity	max. 75 % (dew point spreadsheet has to be regarded)
Thickness	approx. 300 – 600 µm
Theoretical consumption	approx. 0.39 – 0.78 kg/m ² = 0.3 – 0.6 l/m ² The actual consumption depends on applied thickness, temperature, humidity, type of substrate, type of spray / roller technique.

3 Processing Instructions

3.1 Preparation of material

2-component sports field paint must be homogeneously stirred in its original container before processing! Then hardener 8620 is mixed with the base component at the indicated mixing ratio (5:1) while stirring homogeneously. Since 2-component sports field paint has a long curing time, the application process and the subsequent use of the marked surface should be coordinated timewise.

Theoretical consumption of paint and drop-on material is listed in: "Theoretical consumption of material and drop-on materials" on our homepage in kg/m².

The cleaning must occur before the curing of the material is complete. Use Thinner PU/ACRYL (Art. No. 8630) or special cleaner for marking machines (Art. No. 3086).

Avoid blending with other types of cleaners. Between longer works breaks take remaining 2-component sports field paint out of the machine.

3.2 Optimizing of application properties

The 2-C sports field paint is spray able upon delivery. To optimize spray properties, add max. 5% Thinner PU/ACRYL (Art. No. 8630). Only the thinner recommended by the manufacturer must be used.

4 Surfaces / pretreatment

The surface must be dry, clean and free from grease, oil and loose gravel and other contaminations. The surface and potentially existing old markings must be checked for their carrying capacity and compatibility with the material to be applied. In case of doubt, test applications and adhesion tests are required. Ideally, old markings should be removed with appropriate mechanical procedures

5 Application technique

With conventional marking machines (airless or atomizing technique), manually with brush or roller. 2-component sports field paint must be **homogeneously stirred** in its original container before processing! Then hardener 8620 is mixed into the base component at the indicated mixing ratio (5:1) under uniform stirring. The exact machine adjustments depend on the application conditions and the machine type and should be made according to the machine manufacturer's instructions. Since 2-component sports field paint has a long curing time, the application process and the subsequent use of the marked surface should be coordinated accordingly.